



SPLITTER TROUGHS TYPE 3R

FEATURES AND BENEFITS

- CSA Type 3R Enclosure (Weatherproof)
- Screw on lift off cover c/w padlock provision
- Cu/Al lugs with main and 6x secondaries
- Designed for horizontal wall mounting
- Mild steel construction
- Industry standard ASA-61 grey industrial powder coat finish
- 600V Rating
- Ground lug type A (See page 9)

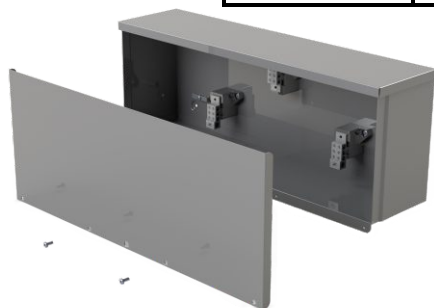
OPTIONS AVAILABLE

- Stainless steel or aluminum construction
- Custom powder coat finish
- Custom sizes
- Custom cutouts
- Custom lugs
- Locking hinged covers
- CSA Type 4 or 4X

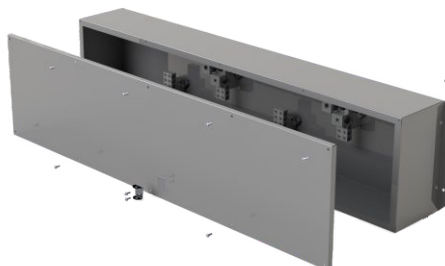
STOCKED ITEM



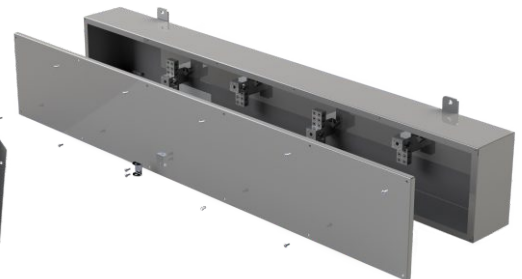
Model # (3 Wire)	Model # (4 Wire)	Amp	Mains	Secondaries	Description
3S-100-24-3W	N/A	125	#14 to 1/0	#14 to #2	9"H x 24"W x 6"D
3S-100-36-3W	3S-100-36-4W	125	#14 to 1/0	#14 to #2	10"H x 36"W x 6"D
3S-100-48-3W	3S-100-48-4W	125	#14 to 1/0	#14 to #2	10"H x 46"W x 6"D
3S-100-60-3W	3S-100-60-4W	125	#14 to 1/0	#14 to #2	10"H x 60"W x 6"D
3S-100-72-3W	3S-100-72-4W	125	#14 to 1/0	#14 to #2	10"H x 72"W x 6"D
3S-225-24-3W	N/A	225	#6 to 300 MCM	#14 to 2/0	9"H x 24"W x 6"D
3S-225-36-3W	3S-225-36-4W	225	#6 to 300 MCM	#14 to 2/0	10"H x 36"W x 6"D
3S-225-48-3W	3S-225-48-4W	225	#6 to 300 MCM	#14 to 2/0	10"H x 46"W x 6"D
3S-225-60-3W	3S-225-60-4W	225	#6 to 300 MCM	#14 to 2/0	10"H x 60"W x 6"D
3S-225-72-3W	3S-225-72-4W	225	#6 to 300 MCM	#14 to 2/0	10"H x 72"W x 6"D
3S-400-36-3W	3S-400-36-4W	400	(1) #4 to 600 MCM or (2) 1/0 to 250 MCM	4) #6 to 4/0 2) #14 to 3/0	10"H x 36"W x 6"D
3S-400-48-3W	3S-400-48-4W	400	(1) #4 to 600 MCM or (2) 1/0 to 250 MCM	4) #6 to 4/0 2) #14 to 3/0	10"H x 46"W x 6"D
3S-400-60-3W	3S-400-60-4W	400	(1) #4 to 600 MCM or (2) 1/0 to 250 MCM	4) #6 to 4/0 2) #14 to 3/0	10"H x 60"W x 6"D
3S-400-72-3W	3S-400-72-4W	400	(1) #4 to 600 MCM or (2) 1/0 to 250 MCM	4) #6 to 4/0 2) #14 to 3/0	10"H x 72"W x 6"D
3S-600-48-3W	3S-600-48-4W	600	(2) #4 to 600 MCM	4) #6 to 4/0 2) #14 to 3/0	12"H x 48"W x 7"D
3S-600-60-3W	3S-600-60-4W	600	(2) #4 to 600 MCM	4) #6 to 4/0 2) #14 to 3/0	12"H x 60"W x 7"D
3S-600-72-3W	3S-600-72-4W	600	(2) #4 to 600 MCM	4) #6 to 4/0 2) #14 to 3/0	12"H x 72"W x 7"D



9"x24"x6" 10"x36"x6"
10"x46"x6"



12"x48"x7"



10"x60"x6" - 10"x72"x6"
12"x60"x7" - 12"x72"x7"

(Galvanized Steel Construction)